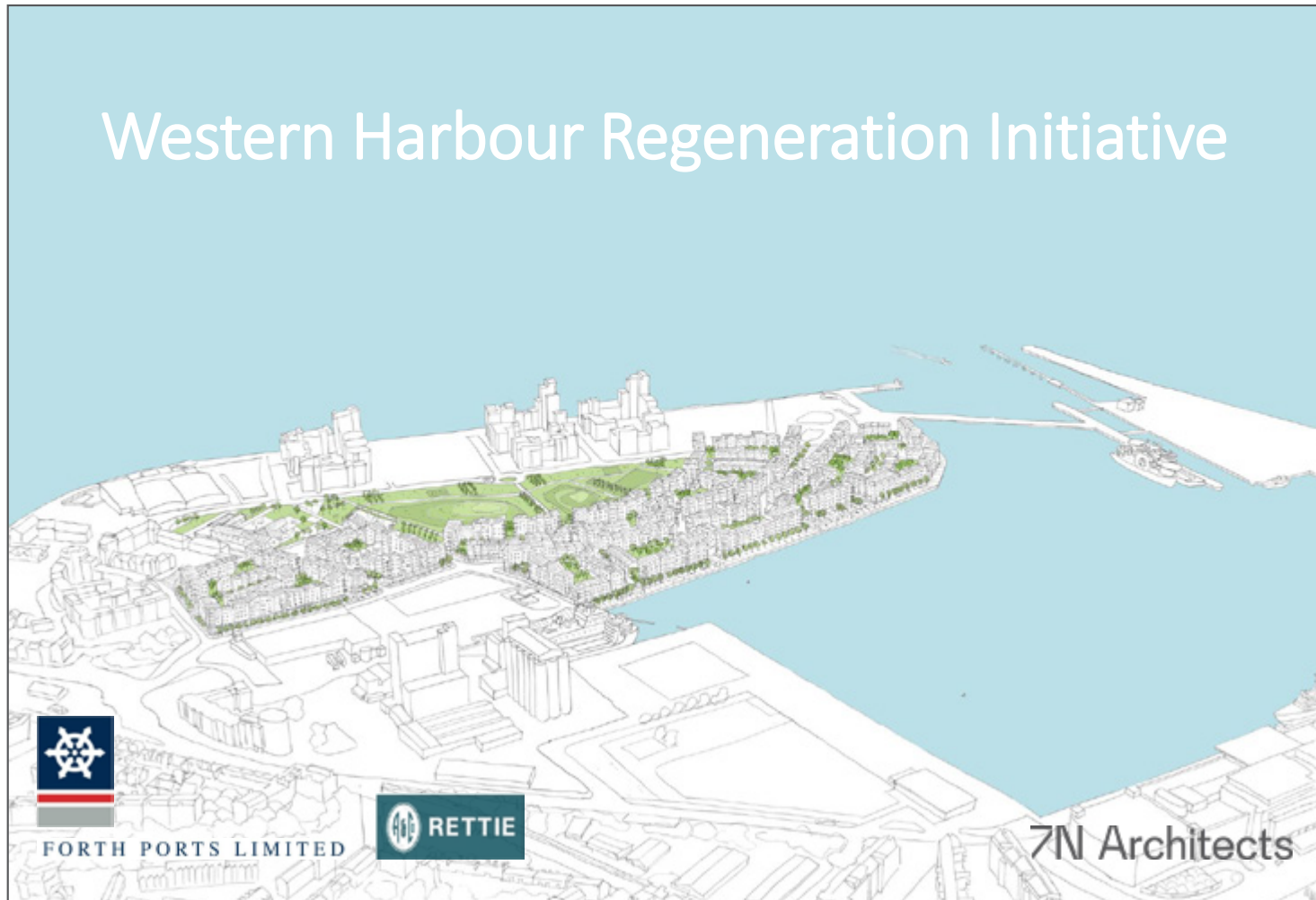






June 2018 - Community Council Presentation

Western Harbour Regeneration Initiative



October 2018 - Revised Design Framework Approved

7N Architects

Western Harbour
Revised Design Framework – 30.08.18



Executive Summary

This Revised Design Framework (RDF), which is submitted on behalf of Forth Ports Limited, sets out the design principles and framework for the detailed design for the Western Harbour Masterplan Planning Permission (ref: 09/00165/OUT) on land within their control at Western Harbour, Leith.

The RDF supersedes the Masterplan Design Brief (MDB), commonly known as the Robert Adam Masterplan, which was approved in 2004. The RDF maintains the quality and placemaking principles of the MDB but tunes the design guidance for the site to reflect changes in CEC policy, guidance and context which have evolved over the past 14 years to facilitate the development of the site. These include changes in construction approaches, space standards, parking solutions and material palettes and reflect changes in CEC policy, as set out in the Edinburgh Local Development Plan (2016) and Edinburgh Design Guidance.

Western Harbour - Revised Design Framework

3

Central Street

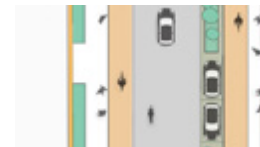
The Central Street is the primary vehicle route through the site, connecting the junction at the entrance to the Auld car park with the northern extents of Western Harbour Drive.

Design Principles

- Building frontages should address street to provide urban character and activity
- Small front gardens or planting should provide privacy to ground floor residential uses
- A segregated cycle way should be provided in line with CEC Design Guidance. Where possible, this should connect into existing routes
- Limited on street parking can be provided but should be broken up into small areas of contained parking, located between street planting and trees or other features



Location



Indicative Plan Detail



Indicative Section

Central Street

The illustration opposite demonstrates a possible approach to the implementation of the Design Principles for the Central Street.

Final layouts and materials will be the subject of detailed applications and should be designed to meet the requirements of the Edinburgh Design Guidance and the emerging Street Design Guidance Fact Sheets.



Example of privacy planting to front gardens



Key

- 1 - Pavement
- 2 - Segregated cycleway
- 3 - Street planting
- 4 - Carriageway
- 5 - Street Parking
- 6 - Private Front Garden
- 7 - Pedestrian crossing point
- 8 - Key public space

Illustrative proposal for Central Street

Western Harbour - Revised Design Framework

37

36

Western Harbour - Revised Design Framework





February 2019 - AMC for 938 Homes



Quantity and Mix

938 residential flats

40% 1 bedroom

40% 2 bedroom

20% 3 bedroom

13 commercial units




1 medical centre

4.7 hectare park



Use



-  Class 1, 2 or 4 use
-  Class 1, 2, 3 or 4 use
-  Class 2 (Health Centre)

Parking



2150 secure cycle parking spaces








440 car parking spaces below decks within plots

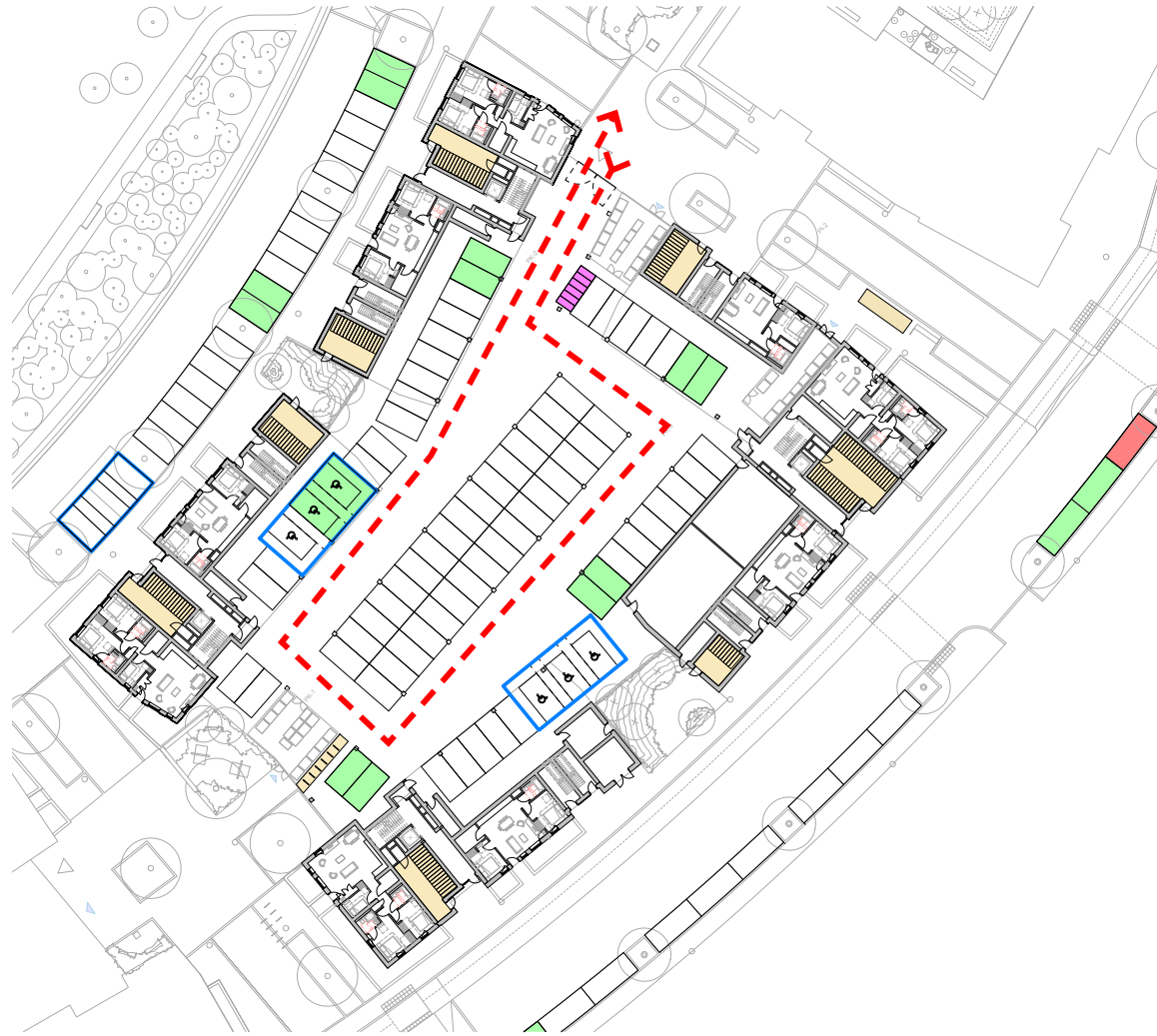
130 on street car parking spaces

1 in 6 spaces with electric vehicle charging provision

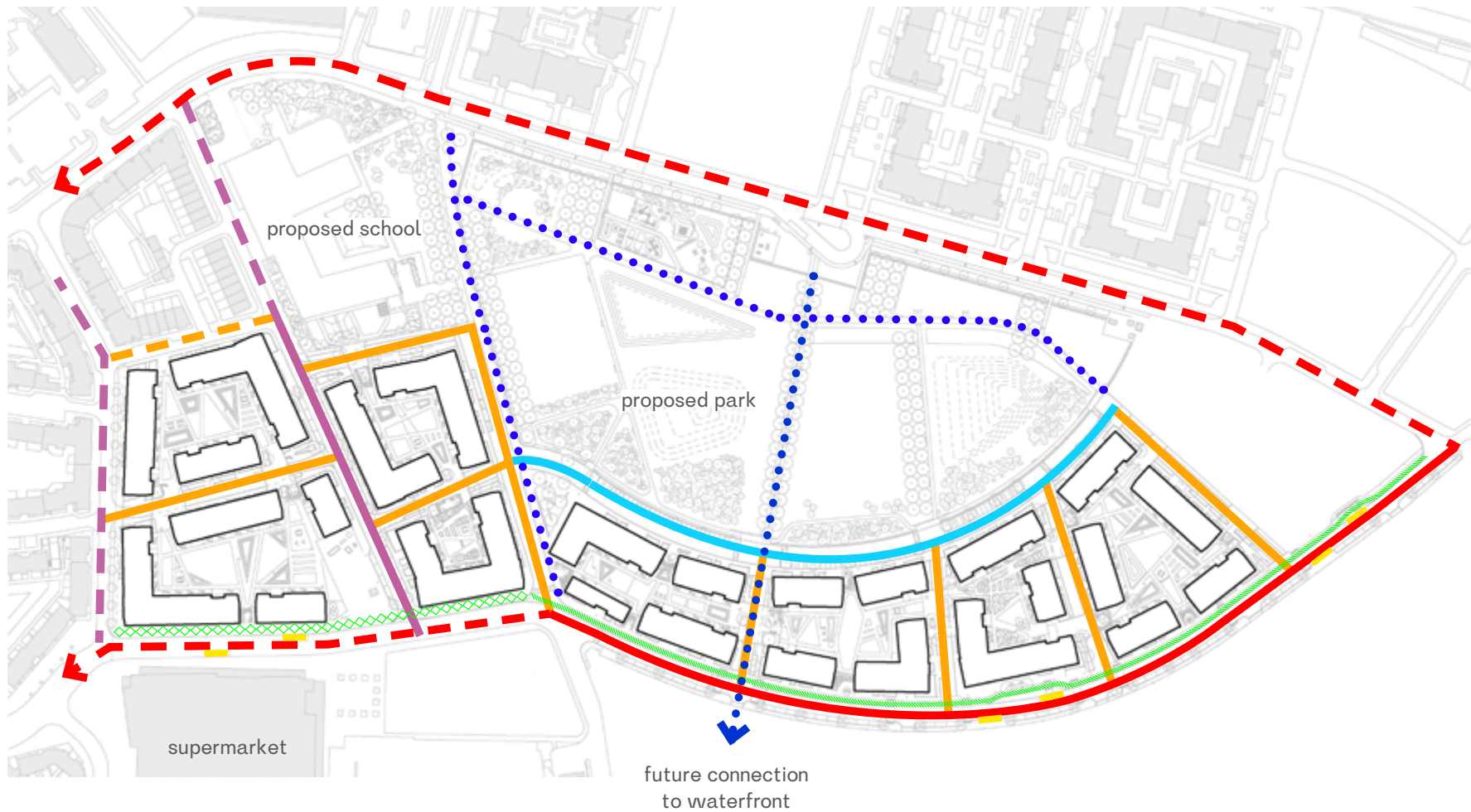
6 car club spaces

Parking

-  Cycle Parking
-  Parking Space
-  Accessible Parking
-  Electric Vehicle Charging
-  Motorcycle Parking
-  Car Club Spaces
-  Vehicle Access



Movement Strategy



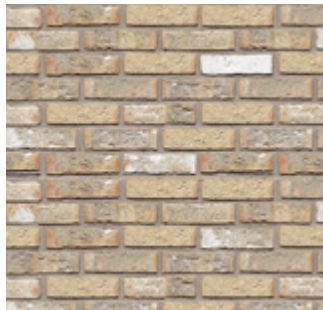
- | | | | | | |
|--|--------------------------------------|--|---------------------------------|--|------------------------------|
| | Central Street (primary route) | | Park Crescent (secondary route) | | Proposed segregated cycleway |
| | Existing primary circulation route | | Shared Street | | Existing cycleway |
| | Central Street (secondary route) | | Existing local streets | | Key pedestrian connection |
| | Existing secondary circulation route | | | | Proposed bus stop |







Materials



Park Crescent



Central Street



Shared Streets













